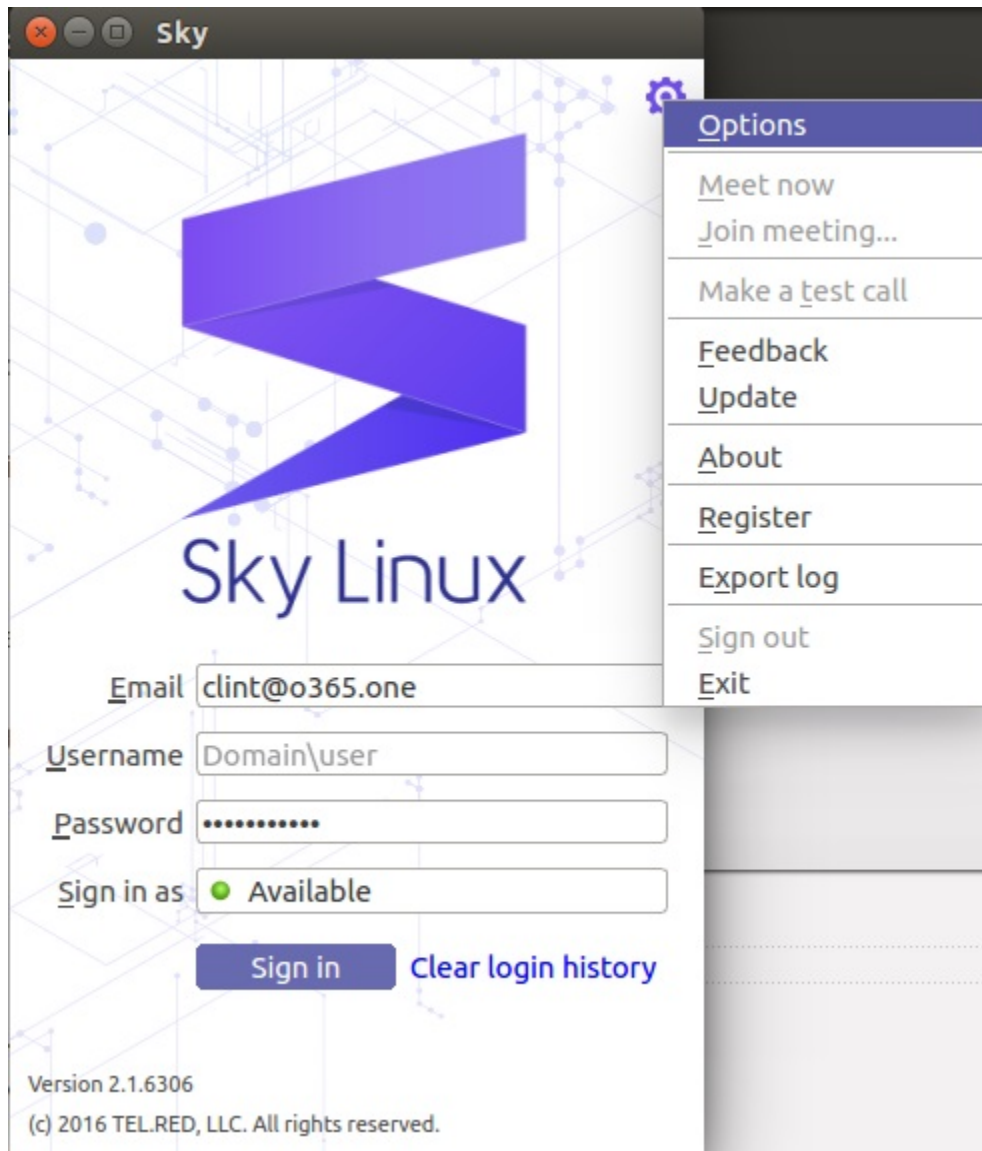


USER-AGENT SETTINGS

Recent versions of Sky Linux automatically try the 3 settings shown below, so you probably don't need to set those manually.

Step 1:

Click Gear...Options



See next page...

Step 2:

In Settings window -> Select **Connection** tab

Check **User-Agent**

Depending on how your company's server is configured to accept User-Agent, you can fill in the User-Agent as:

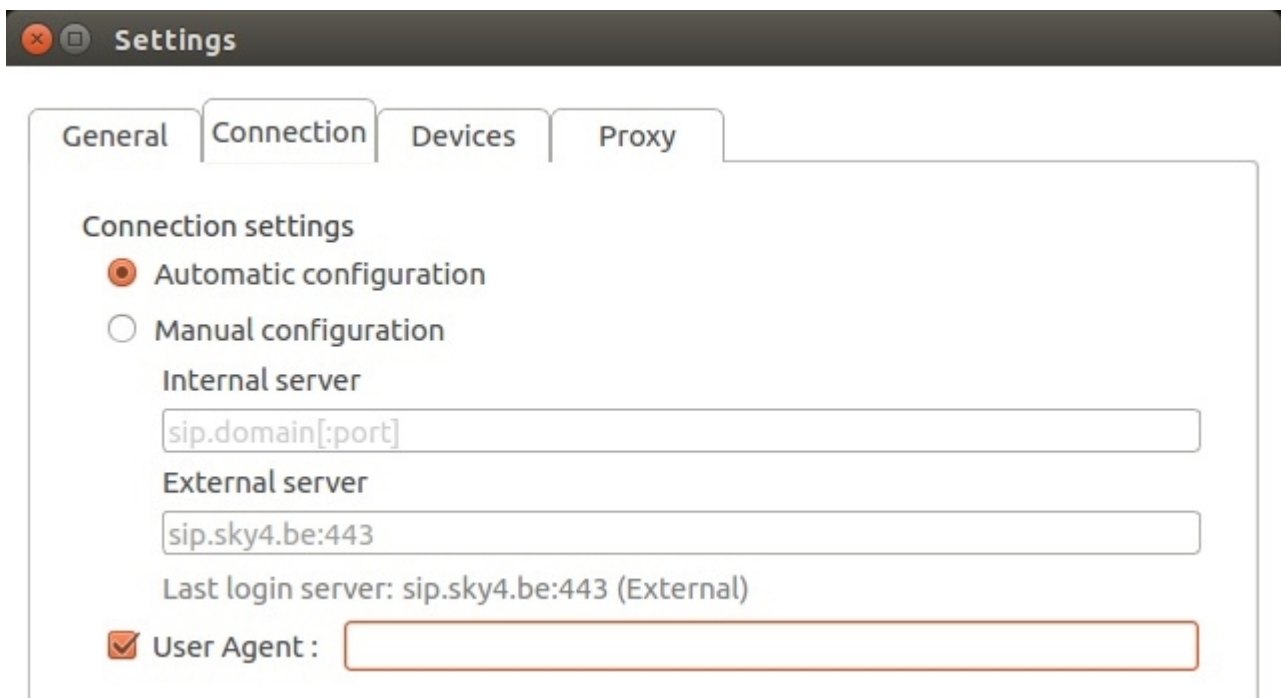
UCCAPI / 15.0.4771.1000 OC / 15.0.4771.1001 (Skype for Business)

UCCAPI / 15.0.4420.1017 OC / 15.0.4420.1017 (Microsoft Lync 2013)

UCCAPI / 4.0.7577.314 OC / 4.0.7577.314 (Microsoft Lync 2010)

or

*Uncheck **User-Agent**, to use the Sky Linux default*



Step 6:

Click **OK**