

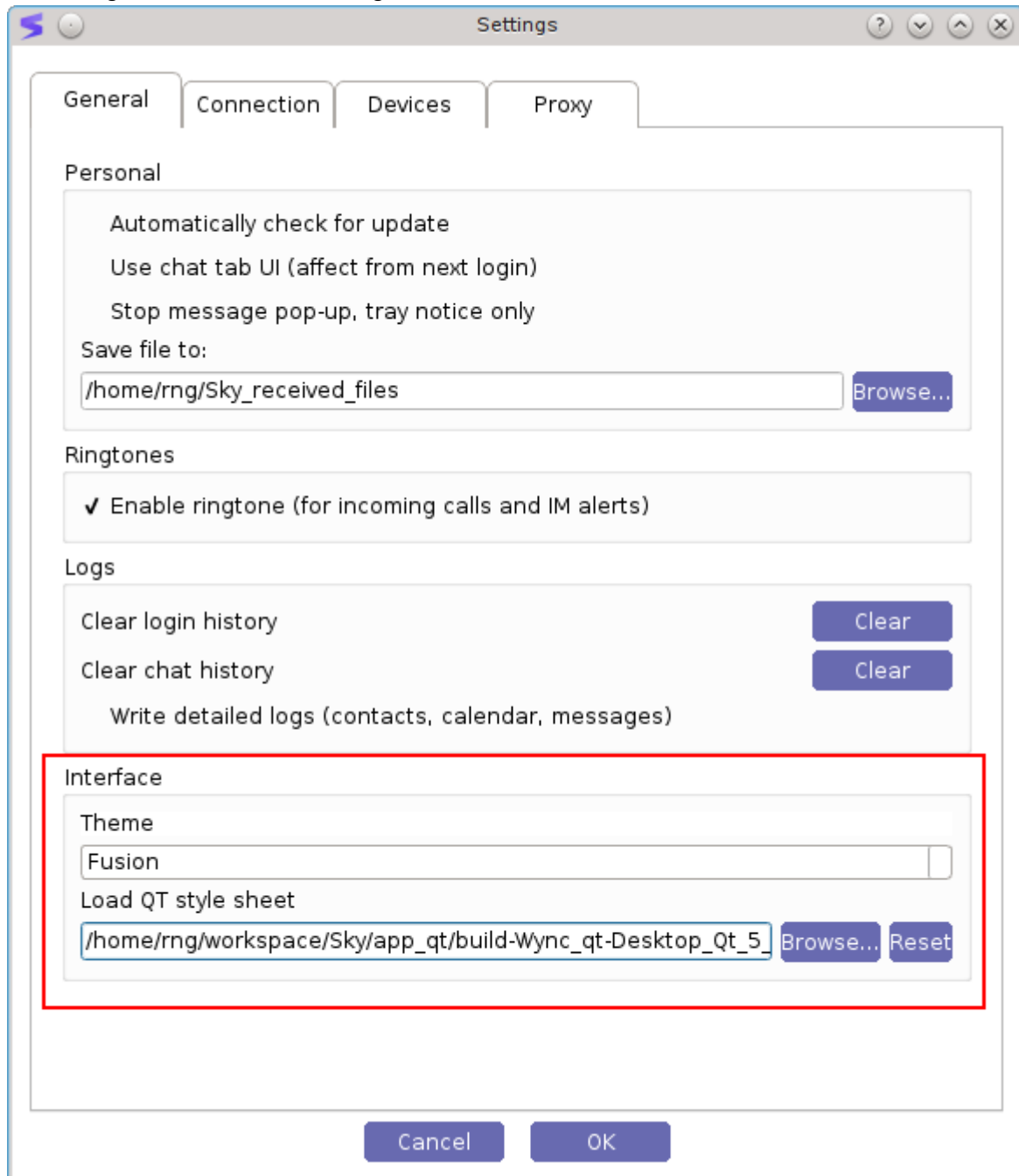
Overview

Sky Linux has a new function to customize styles and themes. There are two settings:

- Switch between Qt built-in themes.

- Load custom stylesheets

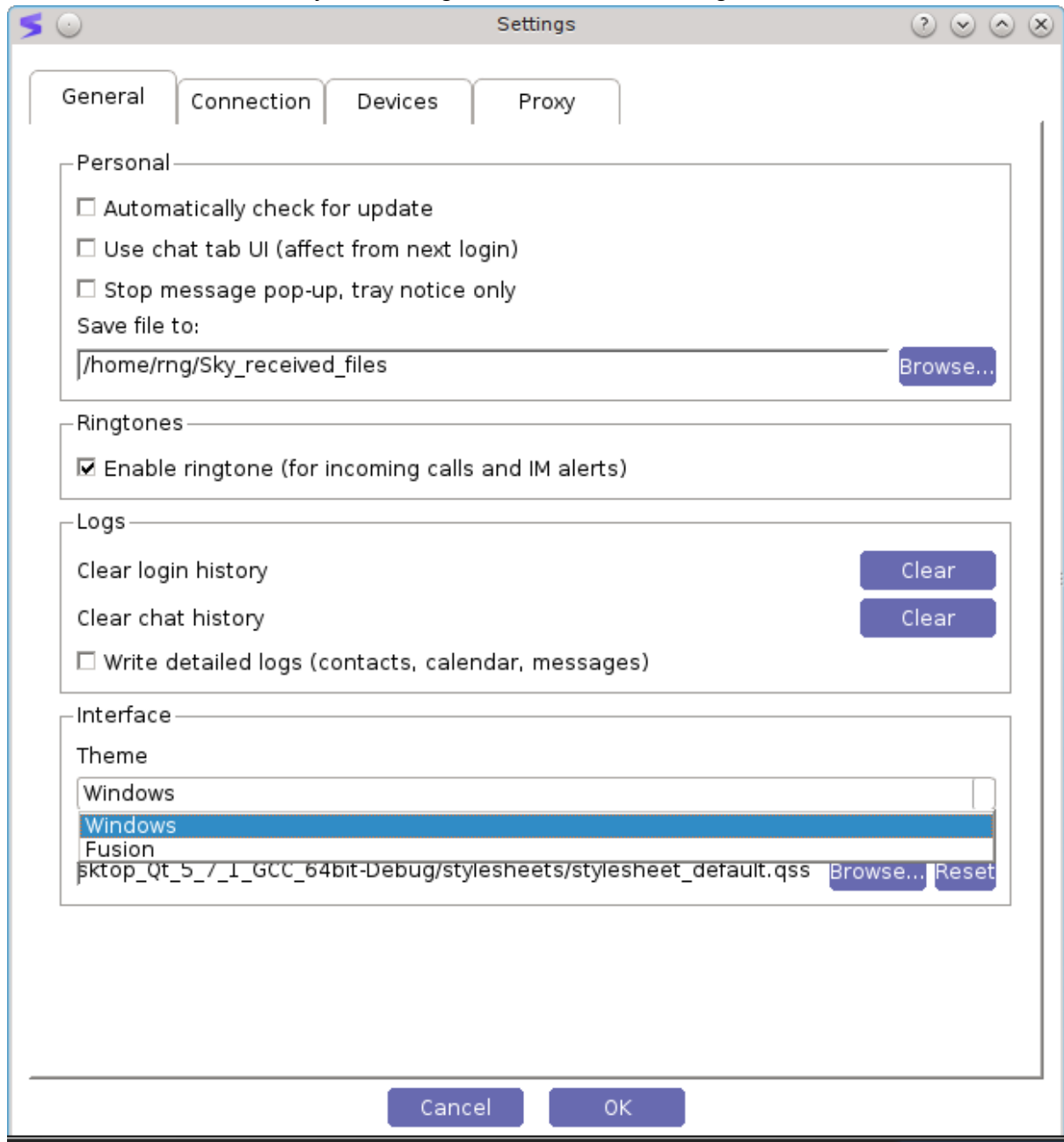
Click on gear -> "General" settings tab -> Interface section.



How to select Qt theme.

Now it is possible to switch between Qt built-in themes. 2 themes should be available by default: Fusion & Windows.

Themes can be switched by: Click on gear -> "General" settings tab -> Interface section.



Note: Some old versions of Ubuntu-based distros have a problem with dark themes. To avoid this problem - built-in theme should be switched from GTK+ to Fusion or Windows.

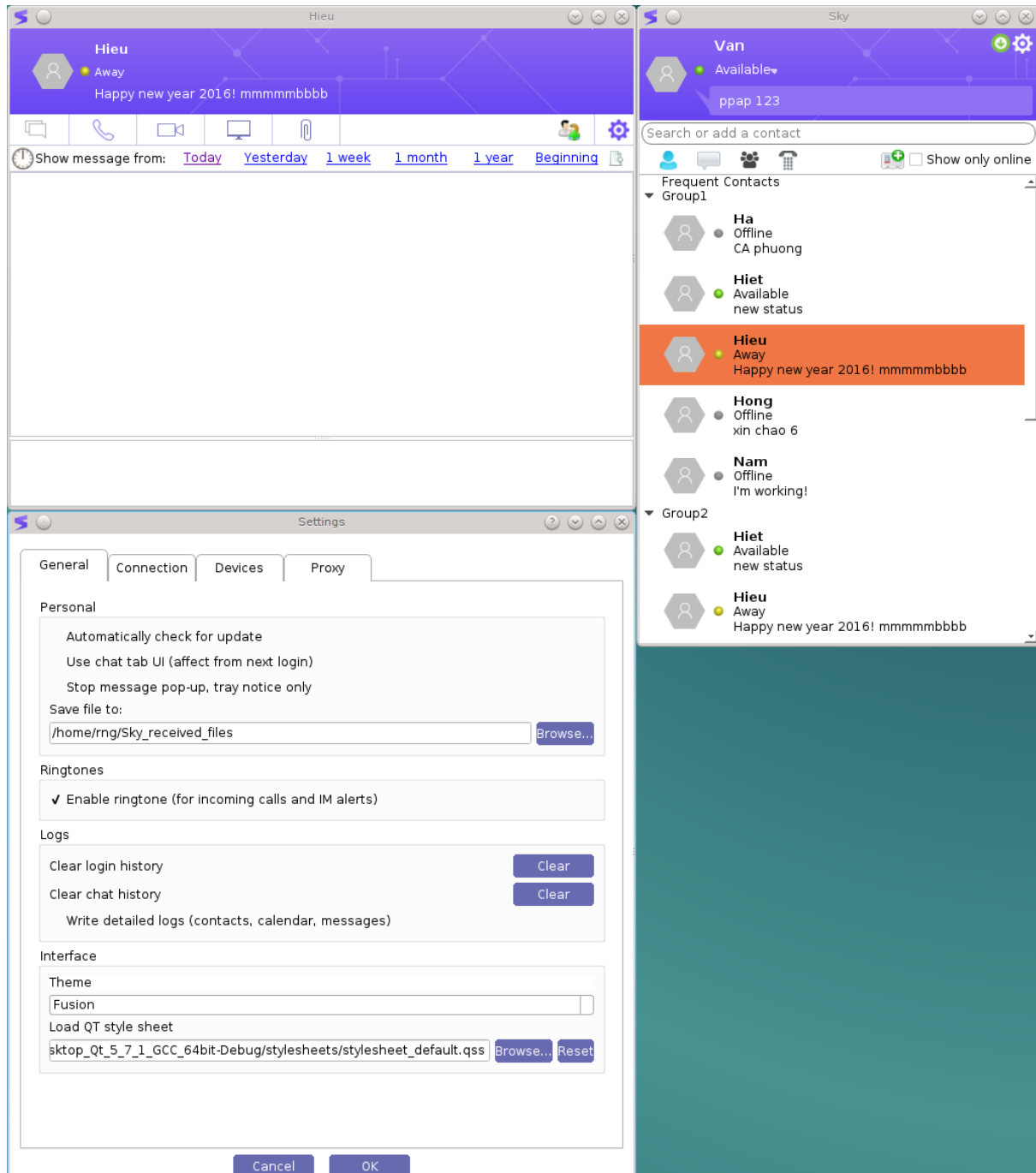
How to load external stylesheet

An external stylesheet file can be loaded in the same configuration section.

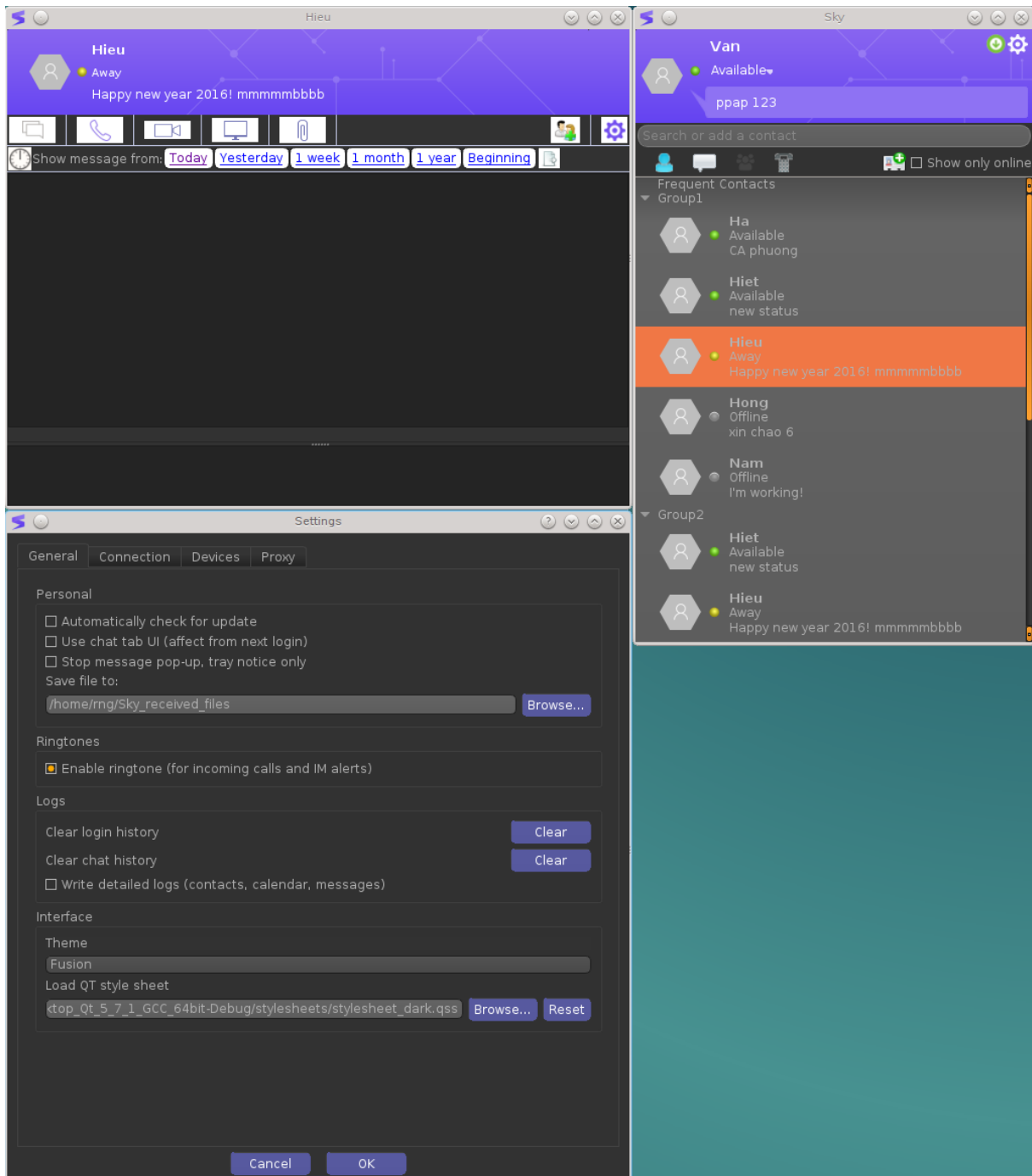
The stylesheet file should have “.qss” extension.

Sky installation folder (/usr/lib/sky) contains subdirectory “stylesheet” with 2 default styles: stylesheet_default.qss, stylesheet_dark.qss (beta)

Default “White” theme:



Beta "Dark" theme:



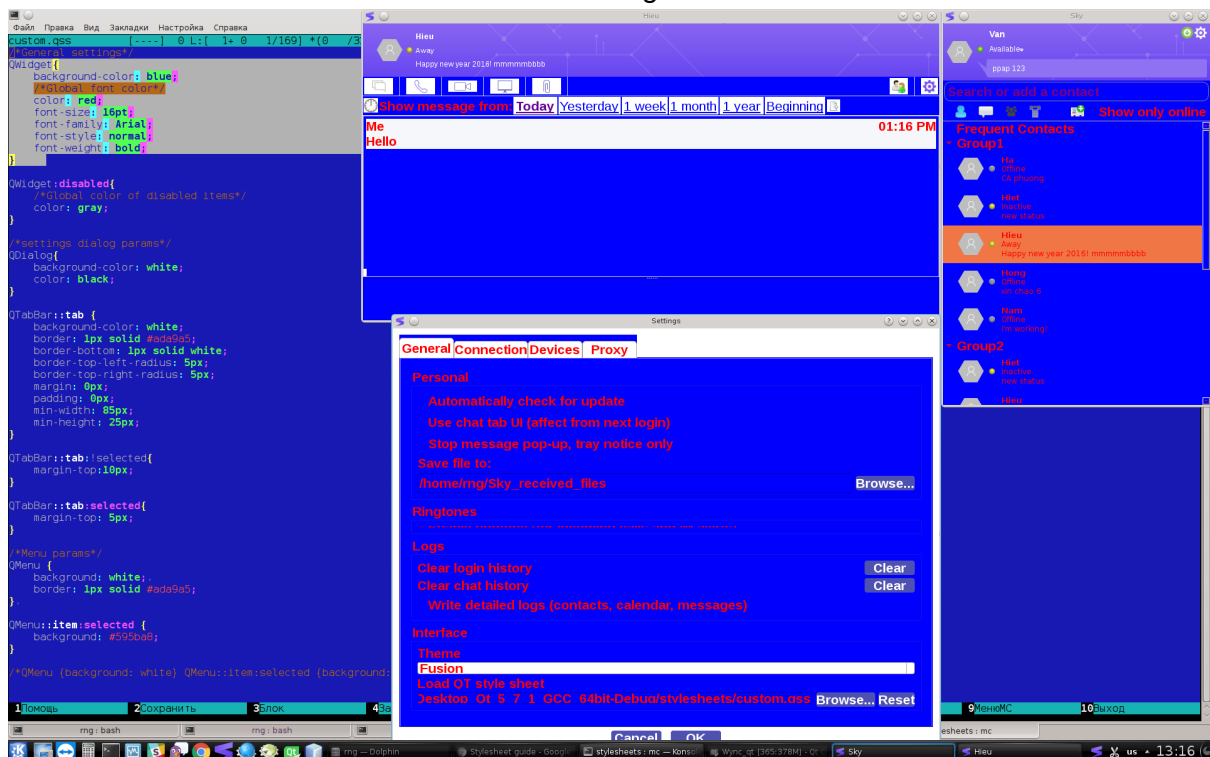
Any selected style can be reset to default "White" style by pressing "Reset" button in "Interface" section.

Custom stylesheets

You can create your own stylesheets. For example, we can take as source stylesheet_default.qss. Let's copy the default stylesheet somewhere, and add few changes to general style settings (set blue background color, red text color, font and font size):

```
/*General settings*/
QWidget{
    background-color: blue;
    /*Global font color*/
    color: red;
    font-size: 16pt;
    font-family: Arial;
    font-style: normal;
    font-weight: bold;
}
```

Then save this file and load from "General" settings.



Note: Do not save changes to stylesheet_default.qss or save backup copy. stylesheet_default.qss will be loaded by default in case of reset.